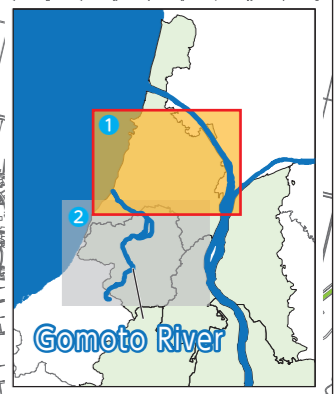
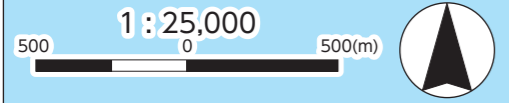


Predicted Precipitation (Predicted Maximum Precipitation)
1-Day Total Precipitation 813mm

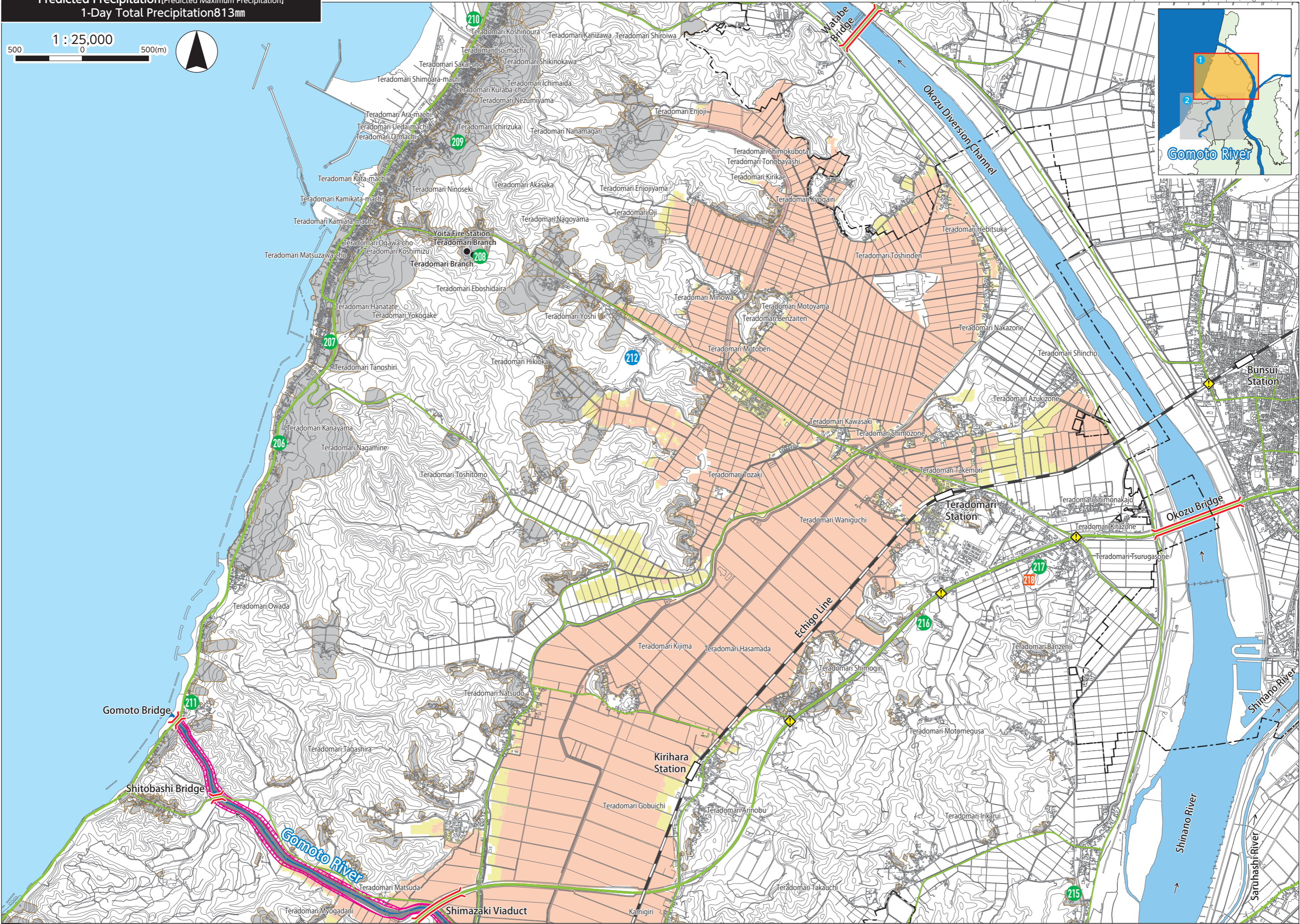


Flood Warning Hazard Map

Flood Warning Hazard Map

Gomoto River (Southern Area) Teradomari (Southern Area) Washima (Northern Area)

Gomoto River (Southern Area) Teradomari (Southern Area) Washima (Northern Area)



Legend

Inundation Depth :	Up to 0.5 meters	From 0.5-3.0 meters	From 3.0-5.0 meters	Evacuation Shelter	Evacuation Shelter (with a social welfare room)	Evacuation Shelters Safe for Child Rearing
Anticipated Zones of Flooding and Destruction of Houses :	Riverbank Erosion (Soil is eroded.)	Landslide Warning Area	Dangerous Places during a Flood : Subterranean Tunnels and Underpasses	Bridges		